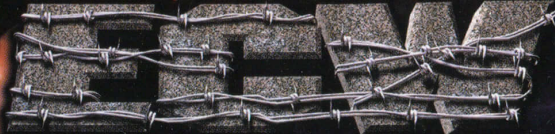
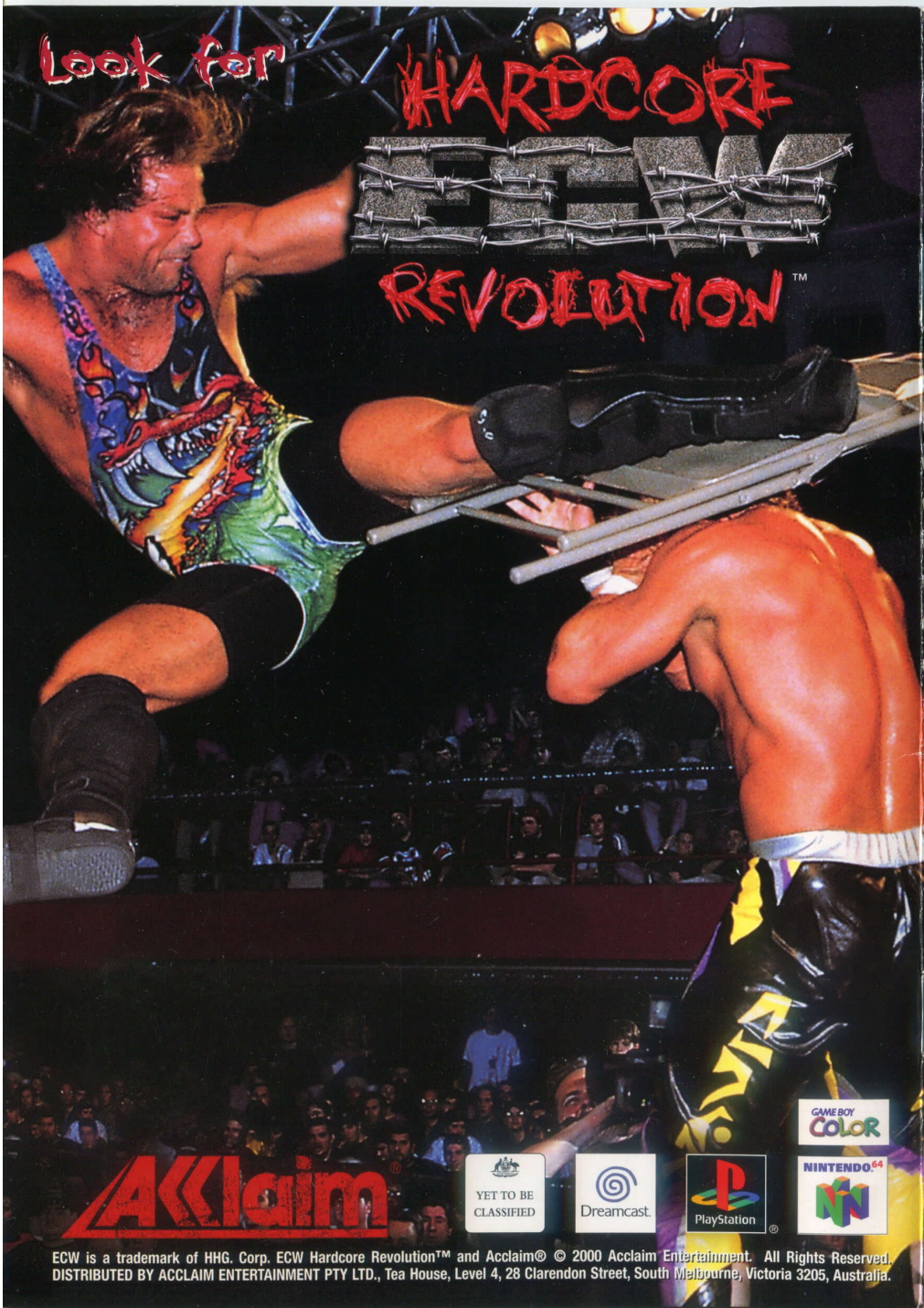


Look for

HARDCORE

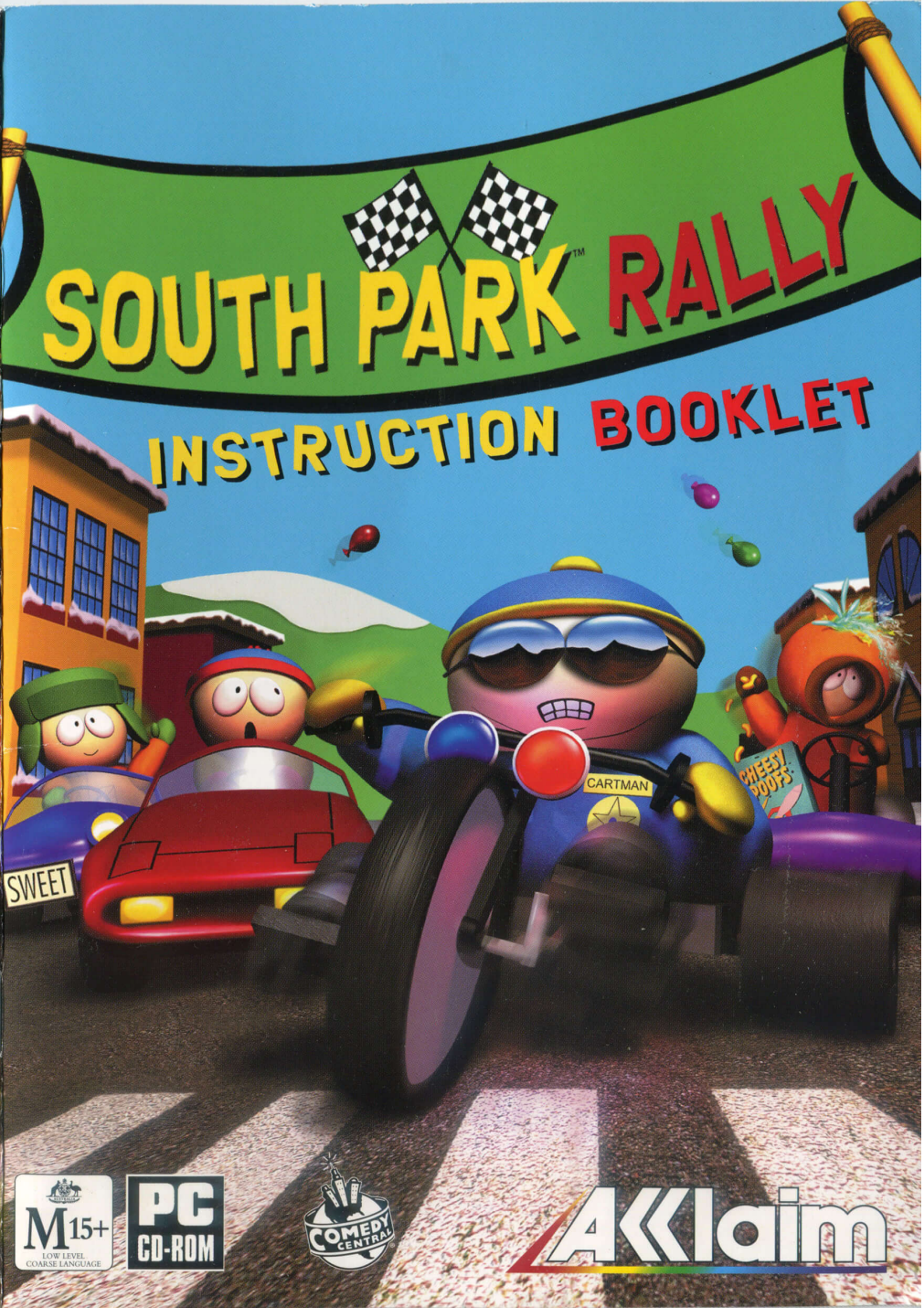


REVOLUTION™



SOUTH PARK RALLY™

INSTRUCTION BOOKLET



Acclaim



Acclaim

ECW is a trademark of HHG. Corp. ECW Hardcore Revolution™ and Acclaim® © 2000 Acclaim Entertainment. All Rights Reserved. DISTRIBUTED BY ACCLAIM ENTERTAINMENT PTY LTD., Tea House, Level 4, 28 Clarendon Street, South Melbourne, Victoria 3205, Australia.

TABLE OF CONTENTS

SYSTEM REQUIREMENTS	2
INSTALLATION	2
PLAYING THE GAME	3
INTRODUCTION	3
MENUS	4
OPTIONS	4
DEFAULT CONTROLS	6
THE SCREEN	6
GAME MODES	7
CHECKPOINTS/OBJECTIVES	7
CHAMPIONSHIP	8
ARCADE RACE	12
MULTIPLAYER	13
ACTION ITEMS	15
HINTS AND TIPS	19

ACCLAIM

Australian Acclaim Games Hotline. For all hints, tips and support call: The Cool Line 1902 220 402
If you wish to be on the exclusive Acclaim Australia e-mailing list, email us at VIPgamer@acclaim.net.au

MINIMUM SYSTEM REQUIREMENTS

- Pentium 200 Mhz
- WINDOWS 95/98
- 32 MB Ram
- 3-D accelerator card with 4mb VRAM
- Direct-X compliant Sound Card
- 170 MB Hard Drive Space
- 4X CD-ROM Drive

INSTALLATION

AUTO PLAY INSTALLATION

1. Turn on your computer. Insert the **SOUTH PARK™ RALLY** CD-ROM disc into your CD-ROM drive (using a disc caddy if appropriate).
2. You will be prompted to install **SOUTH PARK™ RALLY**. Click on **INSTALL**. Follow prompts to install the game, including the required DirectX7 drivers. After the installation of Direct X7, you may need to restart your computer for it to take effect.
3. After Setup has finished installing **SOUTH PARK™ RALLY**, you can launch **SOUTH PARK™ RALLY** and/or the readme.txt. Check the box to make your choice. If you choose to only launch the readme.txt, you will need to re-launch **SOUTH PARK™ RALLY** once you are done reading.
4. Click on **FINISHED** to complete the setup.

MANUAL INSTALLATION

1. Turn on your computer. Insert the **SOUTH PARK™ RALLY** CD-ROM disc into your CD-ROM drive (using a disc caddy if appropriate).
2. Double click on the **MY COMPUTER ICON**.
3. Right click on the CD-ROM ICON and select **OPEN**.
4. Double click on the **SETUP.EXE ICON**.
5. Follow the prompts to install **SOUTH PARK™ RALLY**, including the required Direct X7 drivers. (After the installation of Direct X7, you may need to restart your computer for it to take effect.)
6. After Setup has finished installing **SOUTH PARK™ RALLY**, you can launch **SOUTH PARK™ RALLY** and/or the readme.txt. Check the box to make your choice. If you choose to only launch the readme.txt, you will need to re-launch **SOUTH PARK™ RALLY** once you are done reading."

7. Click on **FINISHED** to complete the setup.



If you experience any difficulty running **SOUTH PARK™ RALLY**, please see the **README FILE** on your disc before contacting us. If you still need help, you may visit us online at <http://www.acclaim.com> or contact Consumer Service at **(516) 759-7800**, Monday-Friday 9AM-7PM EST to speak to a counselor. An automated attendant is available 24 hours a day.

PLAYING THE GAME

Once you've successfully installed **SOUTH PARK™ RALLY** and you checked the option to launch **SOUTH PARK™ RALLY**, you will see the Title Screen. Pressing the **SPACEBAR** on the Title Screen will bring you to the Main Menu and the beginning of your **SOUTH PARK** odyssey.

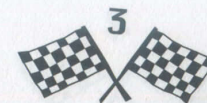
If you chose not to launch **SOUTH PARK™ RALLY** from the setup, you can launch it anytime by double clicking on the desktop shortcut (automatically installed by the **SOUTH PARK™ RALLY** setup) or by following this sequence:

1. Select **START** from the Windows taskbar.
2. Highlight **PROGRAMS**.
3. Highlight **ACCLAIM ENTERTAINMENT**.
4. Highlight **SOUTH PARK™ RALLY**.



Select **SOUTH PARK™ RALLY** from the list of available options and single click on it.

INTRODUCTION

Don't you just love the holiday season? The residents of **SOUTH PARK** do! And to commemorate each and every holiday, they hold a sweet kart race. Get in the spirit by racing Stan, Cartman, Kyle, Kenny and their fellow residents through the streets of **SOUTH PARK** as they battle for truth, justice and some underwear!



MENUS

At the title screen, press  or . You will see a menu with these choices:

CHAMPIONSHIP Race through the holidays in **SOUTH PARK!**







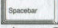


ARCADE Hone your skills in individual races!

MULTIPLAYER Blow someone's butt off!

OPTIONS Gameplay Options/Graphics Options/Sound Setup/Controller Setup/Credits

EXIT

OPTIONS

To set options, toggle through selections with the  and  to highlight an option category and press the  or  to go to that menu. On the menu, highlight an option and cycle through settings with the  and . When done, highlight EXIT and press the  or  to return to the previous menu ( will back you out of a menu as well).

GAMEPLAY

The following options only effect Arcade mode.

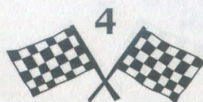
PICK-UPS You can play **SOUTH PARK RALLY** with all pick-ups on or off.

SUCK ASS PICK-UPS When OFF, all pick-ups that harm the player are not in the game.

NUMBER OF CPU CARS Choose the number of computer controlled cars in your race (from 1 to 5).

CPU CHARACTER TYPE Choose which set of computer controlled competitors you'll race against (five different sets or random selections).

RANDOM CHECKPOINT LOCATIONS Set to **ON** (checkpoints appear in different spots) or **OFF** (checkpoints always appear in the same place). Some races are not effected by this option. This option can only be activated by acquiring the appropriate cheat code.



GRAPHICS OPTIONS Change your screen resolution, level of detail and other items see **SOUTH PARK** just how you like it!

SOUND SETUP



SOUND QUALITY Change the quality of the music and sound effects to high, medium or low.

SOUND EFFECTS VOLUME Use the slider to raise or lower the sound effect volume.

MUSIC VOLUME Use the slider to raise or lower the music volume.

MUSIC TEST Pick a delightful ditty from our playlist. Adjust the sound quality, drivers and output to your liking here.

CONTROLLER SETUP

You can configure your controls to your personal taste here! If you choose keyboard controls and would like to reconfigure them, select the ability you want to re-map and press . Then just press the key you want that ability mapped to and, presto, it is as you command! You can do the same for your gamepad (press  to highlight the action and then map it to whatever button you desire!).

CREDITS

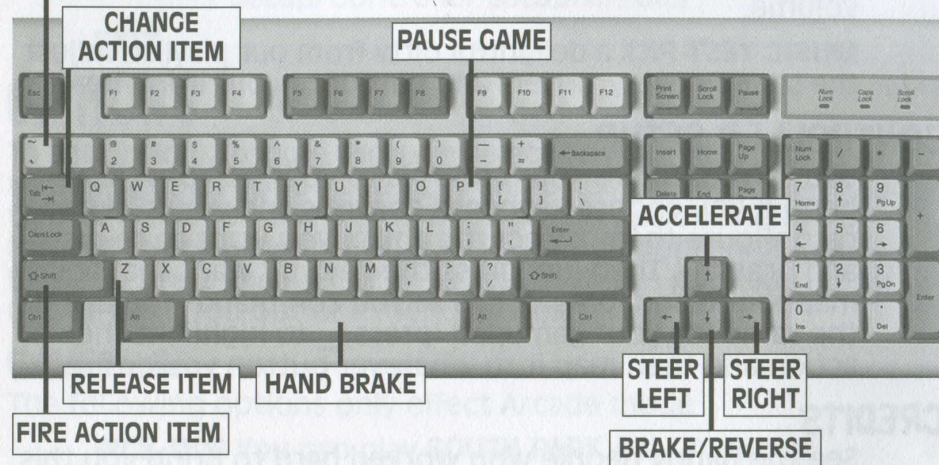
See the happy people who worked hard to bring you this delightful game.



DEFAULT CONTROLS

Below is a representation of the default keyboard controls in SOUTH PARK RALLY. Please note that you can configure these controls to your personal taste by visiting the CONTROLLER SETUP option. You can also use a gamepad to play SOUTH PARK RALLY. To see default controls or to re-map controls for the gamepad, please see CONTROLLER SETUP in the OPTIONS menu.

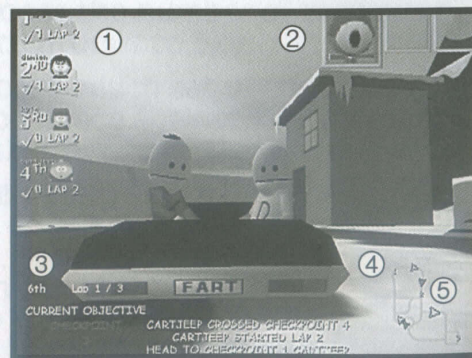
TOGGLE THROUGH HUD



THE SCREEN

Here's all the info you'll ever need:

- 1 Player status icons (color background matches color of icon on map)
- 2 Action items
- 3 Current objective
- 4 Map
- 5 Circle shows Puck Location



GAME MODES

CHAMPIONSHIP

Compete against your neighbors in the spirit of the holidays!

ARCADE

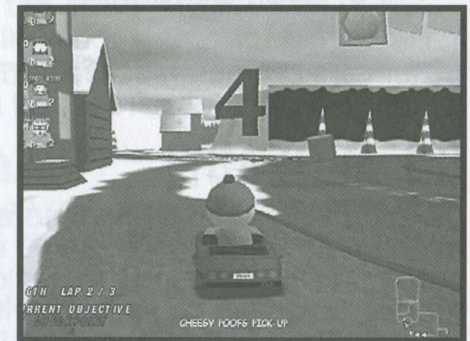
Select individual scenarios to hone your skills!

MULTIPLAYER

You and your compatriots can duke it out in any scenario or in an Ass Battle!

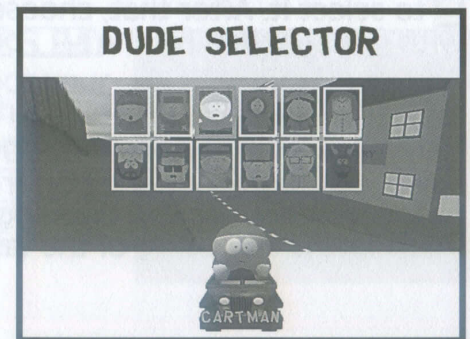
CHECKPOINTS/OBJECTIVES

During your scenic tour of SOUTH PARK, you will notice large numbered, colored checkpoints. If you check the objectives for each race, some will require you to run over these checkpoints to complete a lap. For example, Rally Days #1 asks that you run over 4 checkpoints in numerical order to complete a lap. Additionally, other race objectives require you to pick up or drop off items at checkpoints. Keep this in mind as you race to the finish!



SELECT DUDE

Move using , , , or to choose which dude will carry you to victory and press the or to confirm your selection.



When you start a new game, **ONLY** the following characters are available:

1. STAN



2. KYLE



3. CARTMAN



4. KENNY



5. WENDY



6. CHEF



7. OFFICER BARBRADY



8. UNCLE JIMBO



Other cars can be unlocked in Championship. Some by merely winning, others for harder and more daring stunts.

GO ALREADY!

OK...you've chosen a Championship and chosen a car. In Championship, that's all you need to do—the game automatically chooses the track you'll compete on. In all other modes, however, you get to select the track of your choice. In Multiplayer mode, click Right or Left with your mouse to select your track and race. When you're set, click on **START** to begin. In Arcade Mode, use **↑**, **↓**, **←** or **→** to highlight your objective of choice and then press the **Spacebar** or **Enter** to select it. After that, choose which track you'll race on with **←** or **→** then hit the **Spacebar** or **Enter** to confirm your selection.

CHAMPIONSHIP

Compete against your fellow **SOUTH PARK** natives with love on Valentine's Day! With pride on the Fourth of July! With cleaning products during Spring Cleaning! To help you succeed in your goal, here is an outline of the tasks ahead.

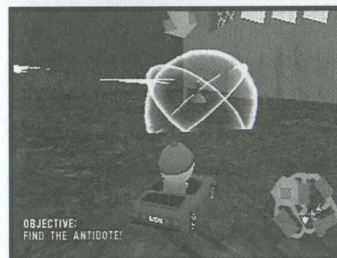


RALLY DAYS #1

This is a race to the finish! Cross all four checkpoints in numerical order. This is counted as a lap. Complete 3 laps to complete this race.

RALLY DAYS #2

Collect the trophy and run! All the other players will be after you in this fast-paced version of tag. Bump or shoot opponents to grab the trophy from them. Cross the 4th checkpoint with trophy in hand and you're the winner!

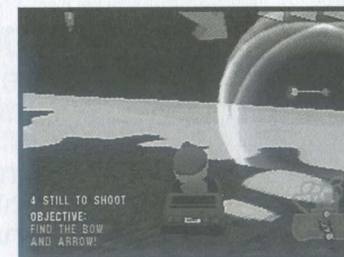


COW DAYS

Everyone has Mad Cow Disease and there's only enough antidote for one of you! Hold on to the cure until you are disease free to win!

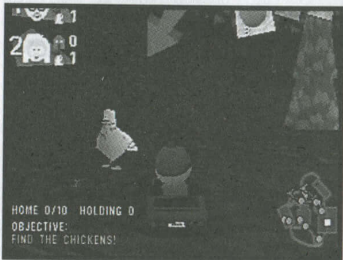
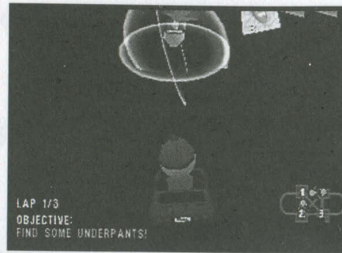
VALENTINE'S DAY

Find the bow and arrow. Shoot your fellow man (or woman) with a love arrow (you'll know they've been shot because their indicator arrow will disappear.) Be the first to shoot them all to come up roses in this event.



SPRING CLEANING

Grab a pair of underpants and cross the checkpoints three times in numerical order. Be warned! There aren't enough undergarments for all of the racers so hold on to your shorts!



READ-A-BOOK DAY

Chicken Lover has been pardoned to promote literacy. While he's out, you must protect the chickens! Collect up to 4 chickens and deposit them at the drop-off point near the Police Station. Bump or shoot opponents to grab their chickens. The first contestant to save 10 chickens rules!

EASTER

The Easter Bunny has dropped **SOUTH PARK'S** eggs all over the mountain. Be the first to collect 20 Easter eggs to win. Luckily, your fellow racers can't steal your eggs in this race!



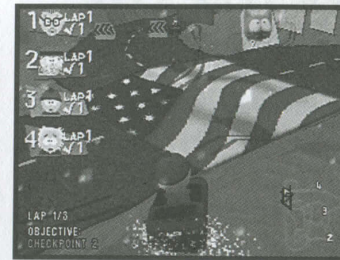
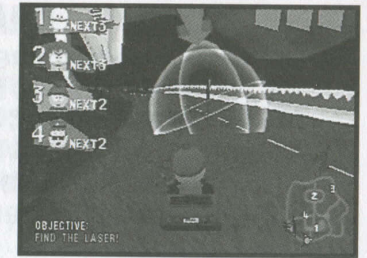
BIG GAY AL'S BIG GAY PINK LEMONADE

Each table will, randomly, request a glass of that cool refreshing drink. Be the first to deliver your 4 glasses of pink lemonade to the correct table to win.



MEMORIAL DAY

Collect the ultra-sophisticated laser device and charge it up on all four checkpoints. Cross all four of these checkpoints with the laser in-hand to win!

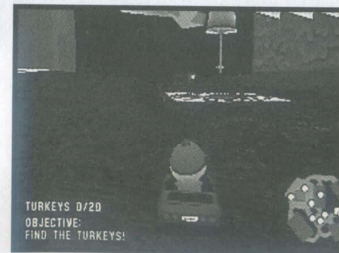
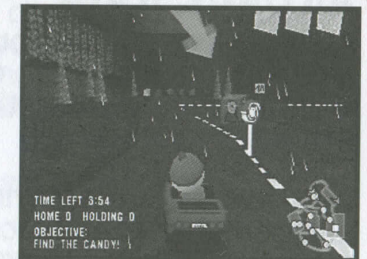


FOURTH OF JULY

Race over the checkpoints in numerical order. When all four checkpoints have been activated, you've completed a lap. The first player to complete 3 laps is the winner!

HALLOWEEN

Grab up to 4 candies at a time and take them to the candy check. Drop-off the most candies before curfew to win!



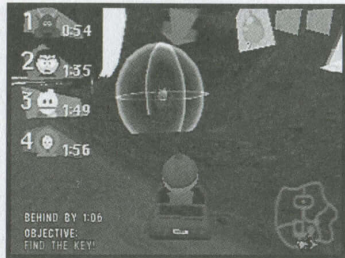
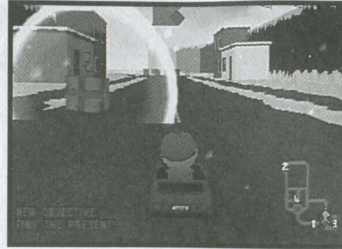
THANKSGIVING

Yum, yum! Eat 'em up! Collect 20 Thanksgiving turkeys for the poor and ring the bell to attract your well-deserved media attention to win this race. Since this is a charity race, turkeys can't be stolen from other racers.



CHRISTMAS DAY

Find and collect the present. Race to the checkpoint flashing on the screen. The first player to cross checkpoint four with the present after all checkpoints have been crossed in order is the winner.



MILLENNIUM NEW YEAR'S EVE

As foretold by Nostradamus and **THE SOUTH PARK ENQUIRER**, Satan is going to destroy the world on the Millennium New Year's Eve. To achieve this goal, Satan must charge his Dimensional Key for 2 minutes. Grab that key and hold onto it for 2 minutes to win!

ARCADE RACE

Practice your skills as you race with any character, on any track and any objective that you've unlocked in Championship! Hey, we'll give you a break and unlock one track and race more than you've finished in Championship just so you can practice before the big game. And remember, practice makes perfect...or something like that.



MULTIPLAYER

Race your friends in this fast paced multiplayer mode multiplayer mode as well as all scenarios you've unlocked in Championship! When you select "Multiplayer" from the Main Menu, you are presented with the following choices:

LAN GAME Search for a local area network game and race with your friends!

HOST GAME For those who always wanted to be the Grande Fromage, here's your chance.

EXIT Go back to the Main Menu screen.

HOSTING A GAME

1. Click on HOST GAME.
2. You will now be on the Multiplayer Lobby Screen. From here you can select which track and which objective you and your fellow racers will compete on. To change the track/objective, just click on the track or objective icon until you find the one you like! You can also select your Player Name, Character and Color. To change your character or color, just click on the element with your mouse until the character or color of your choice appears. To change your name, highlight your default name with your mouse and type in your new handle!

NOTE: The only objective that can be selected on the "Gridiron" track is "Ass Battle."

3. Wait for your friends to join your game. As they join and make whatever character changes they like, they'll check off a "Ready" box. You'll know when everyone is ready when they have green boxes next to their names.
4. Click "Start" and begin your race! (If at any time you want to leave the Multiplayer Lobby Screen, click on "Exit" or hit the "Escape" key.)



JOINING A GAME

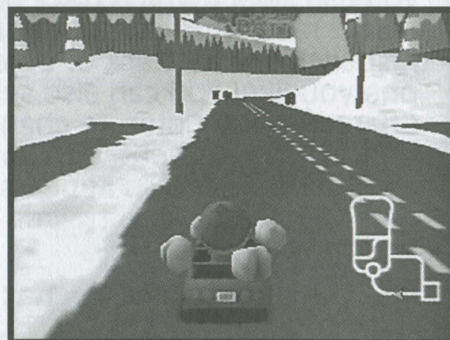
JOINING A LAN GAME

1. Click on LAN Game
2. You will now be on the Multiplayer Lobby Screen. Since you're not the host, you can't change the track or the objective. However, you can change your Player Name, Character and Color. To change your character or color, just click on the element with your mouse until the character or color of your choice appears. To change your name, highlight your default name with your mouse and type in your new handle!
3. When you've set everything up to your satisfaction, click on the red box next to your name. This will indicate to the Host that you are ready!

Sit back and wait for the Host to say "Go!" and then the race is on!

ASS BATTLE

Each player starts with 4 asses floating around their cart. Use Action Items to shoot the ass off of your opponents. Be the last man standing with at least one ass and you're the winner!



ACTION ITEMS

You'll need some help to knock those obviously lacking in the appropriate holiday spirit out of the race. These Action Items may just do the trick!

The Action Items in **SOUTH PARK RALLY** are broken up into different groups. You can tell them apart by their box color. When you pick up a box of a certain color, you get a random gadget.

All Action Items are activated by pressing the **LEFT SHIFT KEY** except for the Terrance Turbo, Weight Gain 4000 and Caffeine which are activated instantly when collected.

YELLOW BOX ITEMS

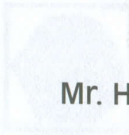
MR. MACKEY BALLOON HEAD GADGET

This item fires a psychedelic peace sign at the player. If it hits, the player's head expands and they float up above the earth!



BARF

Create a puddle of fun as you watch your opponents slow down to a crawl as they attempt to drive through your splat of sticky goo!



MR. HANKEY

Mr. Hankey will protect you from danger, whether from bad Action Items or items fired at you.



KITTY

Unleash the whirlwind of destruction that is Kitty! When you fire Kitty at your fellow racers, Kitty will home-in and blow them out of the way!



TERRANCE TURBO

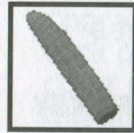
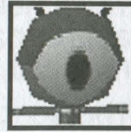
Fires immediately on pickup. Just like eating beans!



PURPLE BOX ITEMS

ANAL PROBE

The alien anal probe comes out of your driver's rear and fires a tracking laser that makes your opponents sing-a!



DILDO

The dildo is a homing missile that, when fired, will seek out the lead racer and bring them to a screeching halt!

EXPLOSIVE DIARRHEA

Explosive diarrhea has the smallest range of all the mines, but the most punch!



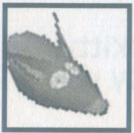
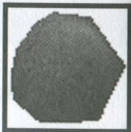
WEIGHT GAIN 4000

This pickup drastically increases the your mass, allowing you to ram through opponents with impunity. Beefcake!

RED BOX ITEMS

CHOCOLATE SALTY BALLS

Are your opponents starting to look like they could use a pick-me-up? Well, let them suck on some Chocolate Salty Balls while you whiz to victory!



RATS

Hitting rats makes the road extremely slippery with a wet, sloppy trail of blood. Dangerous, yes. Funny...yes!

TERRENCE TURBO

Fires immediately on pickup. Just like eating beans!



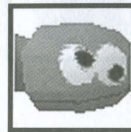
HERPES

This lovely pick up will win your opponents a date with Frida the hooker (whether they want it or not!). Unfortunately for them, she'll leave them with a fond remembrance of their time together – herpes! Just like in life, herpes is with you to the end and multiple trips with Frida will open multiple red dots.

GREEN BOX ITEMS

CHEESY POOFS

Cheesy Poofs are a bouncing, scattering set of projectiles that explode into a cloud of cheese dust when they strike!



MEXICAN STARING FROG

When deployed, this mine turns all in its vicinity to stone. Players' momentum is locked and they lose control. Use it when someone is hot on your tail!

PHILLIP PHART

You control this gas-powered turbo. Save it for when you need that extra burst to bring up the rear!



UNDERWEAR GNOMES

Underwear Gnomes march out, track their target and collect pickups and action items from opposing players then disappear like magic.



16



17

BLUE BOX ITEMS

WATER BALLOON

The water balloon is a mortar-style projectile that strikes your opponents with a big splash. Hold down the **FIRE BUTTON** for a more powerful shot.



DECOY COW

The decoy cow is a fake cow that, when dropped, looks like all the other cows. Should a racer bump into the said decoy cow, it will rupture, sending the car flying!

CAFFEINE

Automatically zooms your car to blazing speeds in a double cappuccino blitz!



SPARKY THE DOG

When released, Sparky will chase the nearest car, grab on and stop the car cold with animal passion.

ASSORTED ITEMS

SPOOKY-VISION

Spooky-Vision can appear in any box at any time, so beware! Spooky-Vision will bring up a vision of a scary face to block your view and prevent you from seeing the road!



PINKEYE

Pinkeye is the rarest and most powerful of the pick-ups. It turns around all players (except the one who picks it up), reverses their steering, makes their eyes pink and puffy and reduces their reaction time.

HINTS & TIPS

- Place mine pick-ups strategically (i.e., drop the Decoy Cow in with the real cows to really throw your opponents for a loop!).
- There's a Continue Coin on every level of Championship. If you're really low in the rankings, stop trying to win and find the coin...and do better next time!
- You must know the track. Practice going around the map in Arcade Race to find the best route, note where the checkpoints are and practice the jumps.
- Make sure you keep an eye on the map. Pucks (e.g., the trophy in Rally Days #1, the eggs in Easter Rally) tend to spontaneously appear. Try to go for the pucks that don't have any CPU opponents near them as they're quite good at snapping up the prize!



18



19

NOTES

ACCLAIM ENTERTAINMENT, INC. LIMITED WARRANTY

PLEASE READ THIS LICENSE CAREFULLY BEFORE BREAKING THE SEAL ON THE DISC PACKAGE. BY BREAKING SUCH SEAL, YOU ARE AGREEING TO BE BOUND BY THE TERMS OF THIS LICENSE. IF YOU DO NOT AGREE TO THE TERMS OF THIS LICENSE, PLEASE DO NOT OPEN THE DISC PACKAGE AND PROMPTLY RETURN THE UNOPENED SOFTWARE TO THE PLACE WHERE YOU OBTAINED IT AND YOUR MONEY WILL BE REFUNDED.

1. License: The software in this package (hereinafter "Software"), regardless of the media on which it is distributed, is licensed to you by Acclaim Entertainment, Inc. on behalf of itself and third party owners ("Licensors") of copyrighted material and trademarks which may be incorporated into the Software. You own the medium on which the Software is recorded, but ACCLAIM and ACCLAIM's Licensors (referred to collectively as "ACCLAIM") retain title to the Software and related documentation. You may use the Software on a single computer and make one copy of the Software in machine-readable form for backup purposes only. You must reproduce on such copy ACCLAIM's copyright notice and any other proprietary legends that were on the original copy of the Software.
2. Restrictions and Termination: The Software contains copyrighted materials, trade secrets and other proprietary material. In order to protect them, and except as permitted by applicable legislation, you may not: (a) decompile, reverse engineer, disassemble or otherwise reduce the Software to a human-perceivable form; (b) modify, network, rent, lend, loan, distribute or create derivative works based upon the Software in whole or in part; or (c) electronically transmit the Software from one computer to another or over a network. You may terminate this License at any time by destroying the Software, related documentation and all copies thereof. This License will terminate immediately without notice from ACCLAIM if you fail to comply with any provision of this License. Upon termination you must destroy the Software, related documentation and all copies thereof.
3. Limitations and Exclusions of Warranties:
 - (a) ACCLAIM warrants to the original purchaser that the tangible media on which the Software is recorded to be free from defects in materials and workmanship under normal use for a period of ninety (90) days from the date of purchase as evidenced by a copy of the receipt. ACCLAIM's entire liability and your exclusive remedy will be, at ACCLAIM's option, the repair or replacement of the media not meeting ACCLAIM's limited warranty and which is returned, postage prepaid, to ACCLAIM's Factory Service Center with a copy of the receipt. ACCLAIM will have no responsibility to replace any media damaged by accident, abuse or misapplication. ANY IMPLIED WARRANTIES OF MERCHANTABILITY AND FITNESS FOR A PARTICULAR PURPOSE, ARE LIMITED IN DURATION TO NINETY (90) DAYS FROM THE DATE OF PURCHASE.
 - (b) You expressly acknowledge that use of the Software is at your sole risk. The Software and related documentation are provided "AS IS" and without warranty of any kind. ACCLAIM EXPRESSLY DISCLAIMS ALL WARRANTIES, EXPRESS AND IMPLIED, INCLUDING, BUT NOT LIMITED TO, THE IMPLIED WARRANTIES OF MERCHANTABILITY AND FITNESS FOR A PARTICULAR PURPOSE. ACCLAIM DOES NOT WARRANT THAT THE FUNCTIONS CONTAINED IN THE SOFTWARE WILL BE UNINTERRUPTED OR ERROR-FREE, OR THAT DEFECTS IN THE SOFTWARE WILL BE CORRECTED, OR THE RESULTS OF THE USE OF THE SOFTWARE OR RELATED DOCUMENTATION IN TERMS OF THEIR CORRECTNESS, ACCURACY, RELIABILITY, CURRENTNESS, OR OTHERWISE. NO ORAL OR WRITTEN INFORMATION OR ADVICE GIVEN BY ACCLAIM SHALL CREATE A WARRANTY OR IN ANY WAY INCREASE THE SCOPE OF THIS WARRANTY, SHOULD THE SOFTWARE PROVE DEFECTIVE, YOU (AND NOT ACCLAIM) ASSUME THE ENTIRE COST OF ALL NECESSARY SERVICING, REPAIR OR CORRECTION.
 - (c) UNDER NO CIRCUMSTANCES INCLUDING NEGLIGENCE, SHALL ACCLAIM, OR ITS DIRECTORS, OFFICERS, EMPLOYEES OR AGENTS, BE LIABLE TO YOU FOR ANY INCIDENTAL, INDIRECT, SPECIAL OR CONSEQUENTIAL DAMAGES (INCLUDING DAMAGES FOR LOSS OF BUSINESS PROFITS, BUSINESS INTERRUPTION, LOSS OF BUSINESS INFORMATION, AND THE LIKE) ARISING OUT OF THE USE, MISUSE OR INABILITY TO USE THE SOFTWARE OR RELATED DOCUMENTATION, EVEN IF ACCLAIM HAS BEEN ADVISED OF THE POSSIBILITY OF SUCH DAMAGES. In no event shall ACCLAIM's total liability to you for all damages, losses, and causes of action (whether in contract, tort (including negligence) or otherwise) exceed the amount paid by you for the Software.
 - (d) Some states do not allow exclusions or limitations of implied warranties or of damages, so that the above exclusions and limitations may not apply to you. This warranty gives you specific legal rights, and you may also have other rights which vary by jurisdiction.
4. Export Law Assurance/Government End Users: You agree and certify that neither the Software nor any other technical data received from ACCLAIM, nor the direct product thereof, will be exported outside the United States except as authorized and as permitted by the laws and regulations of the United States. If the Software has been rightfully obtained by you outside of the United States, you agree that you will not reexport the Software nor any other technical data received from ACCLAIM, nor the direct product thereof, except as permitted by the laws and regulations of the United States and the laws and regulations of the jurisdiction in which you obtained the Software. If you are acquiring the Software on behalf of any unit or agency of the United States Government, the following provisions apply. The Government agrees: (a) if the Software is supplied to the Department of Defense (DOD), the Software is classified as "Commercial Computer Software" and the Government is acquiring only "restricted rights" in the Software and its documentation as that term is defined in Clause 252.277-7013(c)(1) of the DFARS; and (b) if the Software is supplied to any unit or agency of the United States Government other than the DOD, the Government's rights in the Software and its documentation will be as defined in Clause 52.227-19(c)(2) of the FAR or, in the case of NASA, in Clause 18-52.227-86(d) of the NASA Supplement to the FAR.
5. Miscellaneous: This License shall be governed by and constructed in accordance with the laws of the United States and the State of New York, as applied to agreements entered into and to be performed entirely within New York between New York residents. If for any reason a court of competent jurisdiction finds any provision of this license or portion thereof, to be unenforceable, the remainder of this License shall continue in full force and effect. This License constitutes the entire agreement between the parties with respect to the use of the Software and the related documentation, and supersedes all prior or contemporaneous understandings or agreements, written or oral, regarding such subject matter. No amendment to or modification of this License will be binding unless in writing and signed by a duly authorized representative of ACCLAIM.
6. Inquiries/Technical Support: Any questions concerning this Agreement should be addressed to:
CTI Solutions, 70 Ross Street, Forest Lodge, NSW 2037. Phone 1902 220 402
For technical support, please refer to the enclosed Technical Supplement for assistance. If your Software requires repair after the expiration of the 90-day Limited Warranty Period, you may contact the Consumer Service Department at the number listed below. You will be advised of the estimated cost of repair and shipping instructions.
ACCLAIM Hotline/Consumer Service Department (516)759-7800

South Park TM & © 1999 Comedy Central. All Rights Reserved.
Acclaim® & © 1999 Acclaim Entertainment, Inc. All Rights Reserved.
Developed by Tantalus Interactive. All Rights Reserved.
Marketed by Acclaim. Distributed by Acclaim Entertainment Pty Ltd.,
Tea House, Level 4, 28 Clarendon St, South Melbourne, Victoria 3205, Australia.

WWW.ACCLAIM.COM

